



En

Bluetooth GPS Recorder

User Manual

GPS-4043



Contents

1. Before you begin	2
1.1 Note and Warning.....	2
1.2 Introduction.....	3
1.3 Features.....	3
1.4 Applications.....	4
1.5 Appearance.....	4
1.6 Power Switch and Push Button.....	5
1.7 LED Display.....	6
2. Getting started	7
2.1 Checking the package content.....	7
2.2 Getting Started.....	8
Step 1 Charging Your Battery.....	8
Step 2 Turning on the power switch (NAV / LOG).....	9
Step 3 Connecting your PDA device with GPS-4043.....	9
Step 4 Loading your GPS mapping or routing software.....	12
Step 5 Starting the application	12
2.3 Helpful Tips.....	13
3. Using Photo Tagger software	14
3.1 Execute and install software utility Photo Tagger.....	14
3.2 Google Earth.....	14
3.3 Software Utility - GPS-4043 Photo Tagger.....	14
Appendix A. Specifications	15
Appendix B. Iocr GPS Photo	17
Appendix C. How to change battery	18
Appendix D. Certification	19
Appendix E. Warranty Information	21

1. Before you begin

1.1 Note and Warning

- Blumax Bluetooth GPS-4043 Recorder uses Lithium battery. If Blumax Bluetooth GPS-4043 Recorder is used in temperature lower than -10°C or higher than 60°C , its battery charging capability will decrease. Please leave the Blumax Bluetooth GPS-4043 Recorder far from heat or high temperature environment. In addition, do not expose your Blumax Bluetooth GPS-4043 Recorder in temperature higher than $140^{\circ}\text{F}/60^{\circ}\text{C}$. If you do not follow these rules, the battery inside Blumax Bluetooth GPS-4043 Recorder may overheat, explode or burn itself, and this will lead to very serious damage. The Lithium battery inside the Blumax Bluetooth GPS-4043 Recorder should be recycled.
- While in the hospital, turning off the Blumax Bluetooth GPS-4043 Recorder is recommended. Wireless GPS receiver may interfere with medical equipments which use radio frequency.
- For a long period not using Blumax Bluetooth GPS-4043 Recorder, take out the battery and store it in dry/cool places.
- For safety, keep the Blumax Bluetooth GPS-4043 Recorder and all accessories out of children's reach.
- The manufacturer assumes no responsibility for any damages and loss resulting from the use of this manual, or from deletion of data as a result of malfunction, dead battery, or from misuse of the product in any way.
- Use only the supplied and approved accessories. Unauthorized accessories, modifications or attachments could damage the Blumax Bluetooth GPS-4043 Recorder, and may violate regulations governing radio devices.
- Use a dry, clean soft cloth to clean the unit. Do not use harsh cleaning solvents, chemicals, or strong detergents.
- Do not attempt to open the Blumax Bluetooth GPS-4043 Recorder yourself. Unauthorized hacking may damage the unit, and void your warranty.

1.2 Introduction

This Blumax Bluetooth GPS-4043 Recorder features an all-in-one, cost-effective portable GPS logging solution. With its on-board memory, it allows you to log your routes by ways of time/ distance/ speed. Points of interest can also be recorded by a push button. Through user friendly software utility, it shows your track on Google Earth. This data logger is small and robust, ideal to carry everywhere for applications such as route tracking, mountain climbing or fleet management.

1.3 Features

1. MTK GPS chipset 51 channels.
2. 25+ hrs operation time.
3. Embedded with 32Mb memory for saving up to 150,000 way points.
4. Dual modes for both route recording and navigation.
5. Push to log for points of interest.
6. 3 recording methods: by time, by distance or by speed.
7. Tracks can be shown on Google Earth.
8. WAAS and EGNOS supported for better accuracy.
9. Support NMEA-0183 GGA, GSA, GSV, RMC, VTG, GLL.
10. Fully compliant with Bluetooth V1.2
11. Support NMEA compliant mapping software like TomTom, Route66...etc.

1.4 Applications

- Route recording
- Business trip expense management
- Fleet management
- Driving behavior monitoring
- Saving of Point of Interest

1.5 Appearance



1. DC jack (mini USB type)
2. Mode switch (Power off/ Navigation/ Navigation&log)
3. Bluetooth status LED (blue)
4. Battery status LED (red/green)
5. GPS status LED (orange) / Push to log LED (blue)
6. Internal GPS antenna
7. Push Button

1.6 Power Switch and Push Button

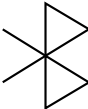
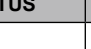
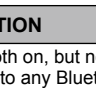
Power Switch	
Right (Off)	Power off
Middle (NAV)	Enable Navigation mode
Left (LOG)	Enable Navigation + log mode
Push button	
Push	Push to log points of interest, LED blinks 3 times.

Difference between NAV and LOG:

NAV	You can use the GPS-4043 Recorder as a Bluetooth GPS receiver to navigate when you have a Bluetooth enabled PDA/ Smartphone in your car. The logging is off.
LOG	In this mode GPS-4043 Recorder works as a pure logger, navigation function is on as well.

1.7 LED Display

The Blumax Bluetooth GPS-4043 Recorder has three LED lights, one is Bluetooth Status LED, the 2nd one is Battery Status LED, the 3rd one is GPS Status LED/ Push to log LED. The status table of LED shows as follows:

CATEGORY	SYMBOL	COLOR	STATUS	FUNCTION
Bluetooth Status LED		Blue	Always on:	Bluetooth on, but not connected to any Bluetooth devices yet
			Slowly blinking:	Sleeping mode (1 time / 5 seconds)
			Quickly blinking:	Bluetooth is connected and ready for data transmission (1 time / 2 seconds)
Battery Status LED		Red	Blinking:	The battery is too low
		Green	Light On:	The battery is charging
		Green	Blinking:	The battery is fully charged
GPS Status LED		Orange	Always on:	Acquiring satellites, GPS position not fix
			Quickly Blinking:	GPS position is fixed, Navigation
		Blue	Quickly Blinking:	LED blinks 3 times, Points of Interest is recorded
			Slowly Blinking:	The memory space is too low (20% left now)
			Solid	The memory is full and stop

2. Getting started

2.1 Checking the package content

Congratulations on your purchase of the GPS-4043 Recorder with built-in Lithium rechargeable battery.

Before you start using GPS-4043 Recorder, please make sure if your package includes the following items. If any item is damaged or missing, please contact your dealer at once.

- 1x Bluetooth GPS-4043 Recorder
- 1x USB to mini-USB cable
- 1x DC cigarette lighter adapter
- 1x Lithium rechargeable battery
- 1x CD Tool (user manual, software utility)
- 1x User manual

*Unit package contents may vary depending on countries without prior notice.

***NOTE:** The Cigarette Adapter can only be used to charge GPS-4043 Recorder. Please don't make use of it with devices other than GPS-4043 Recorder.

2.2 Getting Started

Please follow the procedure step by step.

Step 1 Charging Your Battery

To charge your GPS-4043 Recorder data logger, you have to plug your USB cable into the power source. Charging time is about 3~4 hours and you can charge from PC/ Notebook's USB HOST or from cigarette-lighter in car.

For the 1st time you use the GPS-4043 Recorder, please charge battery until it is full (the green LED blinks). The LED that represents the battery is the right-most battery icon (shown in below).

LED,
represents
the battery
status



- If the LED is red, that means battery power is critically low. Charge immediately.
- If the LED is green, that means battery is charging now.
- If the green LED is blinking, that means battery is fully charged.

Step 2 Turning on the power switch (NAV / LOG)



Difference between NAV and LOG:

NAV	You can use the GPS-4043 Recorder as a Bluetooth GPS receiver to navigate when you have a Bluetooth enabled PDA/ Smartphone in your car. The logging is off.
LOG	In this mode GPS-4043 Recorder works as a pure logger, navigation function is on as well.

Step 3 Connecting your PDA device with GPS-4043

Please refer to the user manual of PDA to enable the Bluetooth connectivity. If the connection between your device and GPS-4043 Recorder is successful, the blue LED of GPS-4043 Recorder will be blinking.

Below, we provide a common procedure of software installation to set up your PDA. (For other PDA, the steps may be different. Bluetooth Manager is a popular program used on Bluetooth device.)

1. Open “Bluetooth Manager” on pocket pc, and establish new connection.



Start > Bluetooth Manager



New

2. Explore a Bluetooth device, and find the “Blumax BT-GPS”



Explore A Bluetooth device >Next



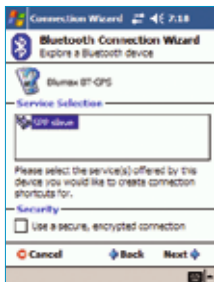
Tap Blumax BT-GPS

3. (Optional)



Passkey 0000
(if your PDA ask for
the passkey)

4. Connect to Serial Port Profile (SPP) Slave

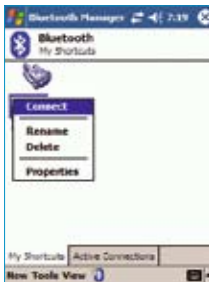


Select SPP slave->Next



Finish

5. Finish Bluetooth Manager Setup



Tap and Hold Blumax
BT-GPS: SPP slave,
Connect



Done

Step 4 Loading your GPS mapping or routing software

You should have mapping software on your PDA/ Smartphone/ laptop or you need to install it before using the GPS-4043 Recorder for navigation.

Step 5 Starting the application

Select the correct COM port & baud rate within the application

Note: The Bluetooth device in most of the applications has an "auto-detect" feature so that you do not need to select the Baud Rate.

2.3 Helpful Tips

- It's better to turn off the GPS-4043 Recorder when you don't use it, or the serial Flash's life can't last long.
- Some vehicles having heavy metallic sun protecting coating on windshields may affect GPS signal receptions.
- Driving in and around high buildings may affect GPS signal receptions.
- Driving in tunnels or indoor park may affect signal receptions.
- In general, any GPS receiver performs best in open space where it can see clean sky. Also weather will affect GPS reception – rain & snow contribute to worse sensitivity.
- Low battery of a PDA or of an GPS-4043 Recorder may affect signal receptions.
- Please check the correct “COM” and “Baudrate” of your PDA.
- GPS-4043 Recorder output data updates every second, therefore the actual position and the position shown in your map may have slight time delay. This may happen when you drive at higher speed or make a turn around a corner.
- Note that GPS-4043 Recorder may not work indoors where it can not see the sky.
- For the 1st time you use the GPS-4043 Recorder, it will take 1 to 3 minutes to obtain the satellite constellation information and fix your position, this is called “Cold Start”. If you replace the battery, GPS-4043 Recorder will do Cold Start again.
- If your GPS-4043 Recorder can't fix your position for more than 20 minutes, we suggest you change to another spot with open space and then try again.

3. Using Photo Tagger software

3.1 Execute and install software utility Photo Tagger

Complete GPS Photo Tagger and USB drivers installation (Refer to CD)

3.2 Google Earth

If your computer is not yet installed with Google Earth. Google Earth has a free download version, go download it on the internet first. For more information, please visit <http://earth.google.com/>.

3.3 Software Utility - GPS-4043 Photo Tagger

For further function to use the Photo Tagger software in detail, please refer to Photo Tagger user manual:

Photo Tagger software > Help > User Manual

To use a mini-USB cable to connect the GPS-4043 Recorder to your PC, you have to power on the GPS-4043 unit. Please keep in mind to switch to LOG mode while using Photo Tagger software.

Appendix A. Specifications

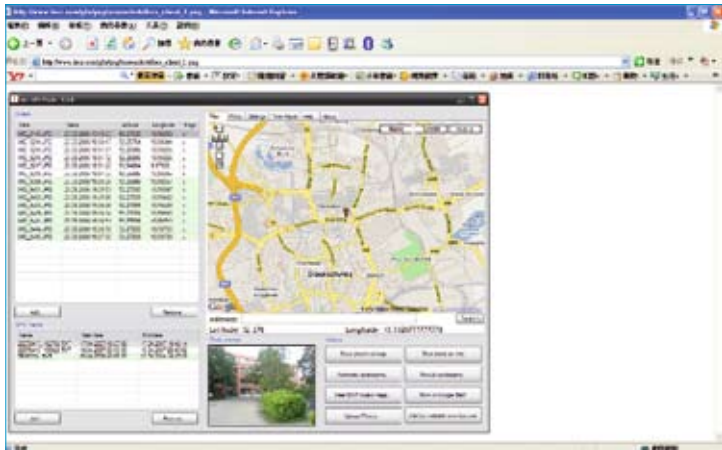
General	
Frequency	L1,1575.42MHZ
C/A Code	1.023MHZ
Datum	WGS84
Performance Characteristics	
Position Accuracy	Without aid: 3.0m 2D-RMS < 3m CEP (50%) without SA (horizontal) DGPS (WAAS,EGNOS,MSAS): 2.5m
Velocity Accuracy	Without aid: 0.1m/s DGPS (WAAS,EGNOS,MSAS): 0.05m/s
Acceleration	Without aid: < 4g DGPS (WAAS,EGNOS,MSAS): < 4g
Timing Accuracy	50 ns RMS
Reacquisition Time	< 1s
Hot start	1s
Warm start	33s
Cold start	36s
Sensitivity	Acquisition: -144dBm Tracking: -158dBm
Update	1Hz
Dynamic	
Altitude	Maximum 18,000m
Velocity	Maximum 515m/s
Acceleration	Maximum 4g
Power	
Input Voltage	Vin: 5.0V±10%

Power Consumption	40mA
Battery	Rechargeable 1000mAH Lithium battery
I/O	
Available Baud Rates	115200 bps
Protocols	NMEA 0183 v3.01
Environment	
Operating Temperature	-10°C ~ 60°C
Storage Temperature	-20°C ~ 60°C
Charging Temperature	0°C ~ 45°C
Bluetooth	
Standard	Fully compliant with Bluetooth V1.2
Output Power	0dBm (Typical), ClassII
Range	Up to 15 meters
Bluetooth Profile	Serial Port Profile (SPP)
Frequency	2.4G ~ 2.4835GHz ISM Band
Security	Yes
USB Bridge	
Standard	Fully compliant with USB2.0
Full - speed	12Mbps
Dimension	46.5 x 72.2 x 20 mm
Data Log	
32Mb serial Flash ROM	
Up to 150,000 way points.	
Log GPS data by time interval/ distance/ speed limit.	
Log GPS data by button push.	
User can configure settings by using utility.	

Appendix B. locr GPS Photo

With GPS-4043 data logger and locr GPS Photo software, users are allowed to import geotagging adds information to photos. The position (latitude/ longitude) then be written into the EXIF header for the further application. Also, locr GPS Photo can integrated travel log and digital photos by date/ time to show photos on the map directly.

Please find the installation file for Windows XP/ Vista in CD tool, or go to <http://www.locr.com> for further information.



Appendix C. How to change battery



Step 1 Press the button to right side



Step 2 Open the cover of battery



Step 3 Take out the battery



Step 4 Fit new battery into GPS-4043



Step 5 From R to L close the cover



Step 6 Done

Appendix D. Certification

FCC Notices

This device complies with part 15 of the FCC rules. Operation is subject to the following two conditions:

1. This device may not cause harmful interface, and
2. This device must accept any interference received, including interference that may cause undesired operation.

FCC RF Exposure requirements:

This device and its antenna(s) must not be co-located or operation in conjunction with any other antenna or transmitter.

NOTE: THE MANUFACTURER IS NOT RESPONSIBLE FOR ANY RADIO OR TV INTERFERENCE CAUSED BY UNAUTHOURIZED MODIFICATION TO THIS EQUIPMENT. SUCH MODIFICATIONS COULD VOID THE USER'S AUTHORITY TO OPERATE THE EQUIPMENT.

CE Notices

CE 0984 Ⓢ

Is herewith confirmed to comply with the requirements set out in the Council Directive on the Approximation of the Laws of the Member States relating to Electromagnetic Compatibility (89/336/EEC), Low-voltage Directive (73/23/EEC) and the Amendment Directive (93/68/EEC), the procedures given in European Council Directive 99/5/EC and 89/336/EEC.

The equipment was passed. The test was performed according to the following European standards:

- EN 300 328-2 V.1.2.1 (2001-08)
- EN 301 489-1 V.1.4.1 (2002-04) / EN 301 489-17 V.1.2.1 (2002-04)
- EN 50371: 2002
- EN 60950: 2000

Appendix E. Warranty Information

Thank you for your purchase of GPS product from the company.

The company warrants this product to be free from defects in materials and workmanship for one year from the date of purchase. The warranty for accessories is six months. The stamp of distributor or a copy of the original sales receipt is required as the proof of purchase for warranty repairs. The company will, as its sole option, repair or replace any components, which fail in normal use. Such repair or replacement will be made at no charge to the customer for parts or labor. The customer is, however, responsible for any transportation costs.

This warranty does not cover failures due to abuse, misuse, accident or unauthorized alteration of repairs. The company assumes no responsibility for special, incidental punitive or consequential damages, or loss of use.



www.blu-max.eu